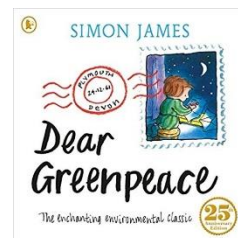




25th March 2019  
Our Week Ahead  
Welcome Back 😊



Our week ahead – What are we going to be learning?

- Reading *Dear Greenpeace*.
- What animals' habitats are and which animals migrate.
- About the habitats different animals live in.
- Drawing some animals in their forest habitat.
- Writing letters about animals we have seen.
- Thinking about our mums and people who are special to us (we will be making things for them...shhhh).
- Saying why we love our special person.
- Solving addition problems.
- Singing songs that count in ones, twos and tens.
- Observing our eggs in the incubator.

Parents evening sign-up sheets will be in the main school hall Monday, Tuesday and Wednesday morning next week.

### Tea Towels

**SALE**

We still have some tea towels left. If you would like to buy one they would make a great mother's day gift! £3.00 each, please put a note in communication books if you would like any.

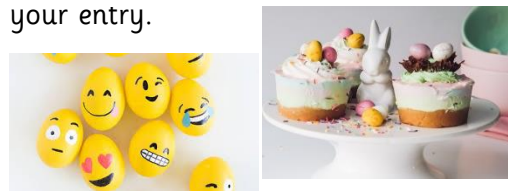
### Work at home

We would like you to find out about the habitat of an animal of your choice. You could pick your favourite animal and find out about its habitat. You could write about the animal's habitat or draw a picture.



### Easter Creative Competition

On the last day of term we are holding an Easter craft competition. Children can make an Easter craft at home such as a bonnet, an Easter garden, an Easter cake, anything as long as it is made and Easter / Spring themed! There will be prizes given for 1<sup>st</sup>, 2<sup>nd</sup> and 3<sup>rd</sup> place. We cannot wait to see your entry.



### Farm trip

We now have enough parent helpers for our farm trip. Thank you to all who offered their help. Please remember to return reply slips and pay via Parent Pay by Friday 5<sup>th</sup> April. Thank you 😊

W.O.W – Word Of the Week.

**'habitat'** – the home of an animal.

Can you use this word at home?